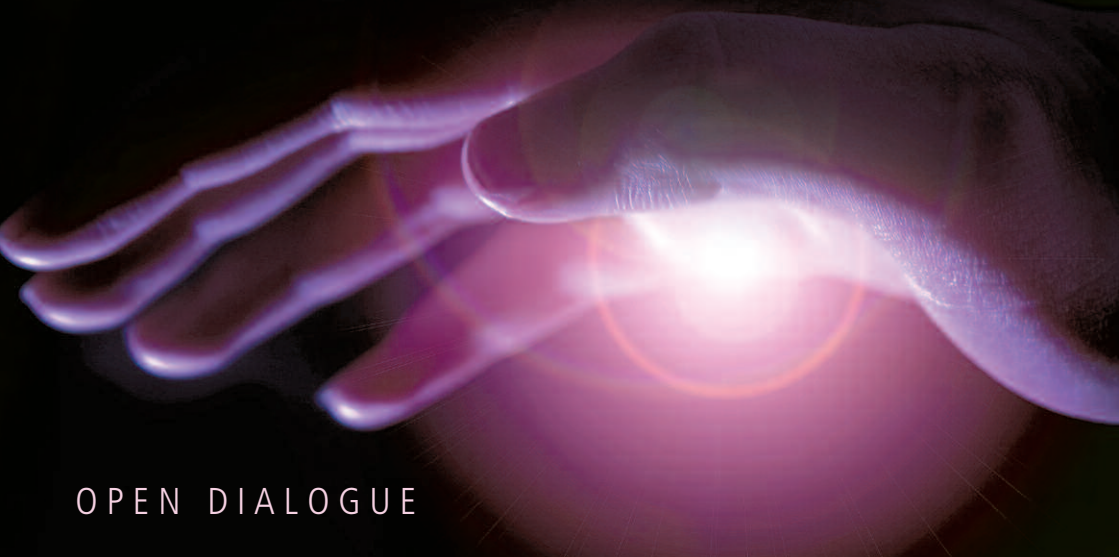


Scientific and Medical Network • Royal Society of Medicine  
Section of Hypnosis and Psychosomatic Medicine



OPEN DIALOGUE

# The Healing Intention: Conscious and Unconscious

Royal Society of Medicine  
1 Wimpole Street  
London W1

Monday 9th June 2008

Speakers

Prof. Kim Jobst  
Dr. Shaul Livnay  
Prof. Harald Walach

Chairs:

Martin Wall and Claudia Nielsen

**5 hours CPD applied for**



## THE CONFERENCE

This conference will examine the use of intention as a unifying concept in the study of mind/body healing where intentional healing involves the projection of awareness, with purpose and efficacy, towards the wellbeing of another. This encompasses a wide spectrum of clinical activity. The conference will review basic science and clinical trials in this area, considering the complexities of differentiating psychological, psychosocial, and psychic influences. It will encourage and empower delegates to utilise many of these phenomena in their daily clinical practice and promote a consideration of the person who has the illness, rather than of the illness the person has. Among the areas we hope to consider are postoperative pain, chronic pain, wound healing, anxiety, hypertension, geriatric care and spiritual welfare.

We are inviting short contributions from the floor for which we require a 100 word abstract to be submitted to the Conference Administrators, Scientific and Medical Network not later than May 15.

## PROGRAMME

- 9:00 Registration
- 9:30 Introductions – Martin Wall, Claudia Nielsen
- 9:45 Dr. Shaul Livnay: ***The Nature of the Relationship / Connection between Therapist and Patient in the Therapeutic Setting***
- 10:30 Dr. Kim Jobst: The Healing Intention – Conscious and Unconscious - Meaning and Magic
- 11:15 Coffee
- 11:45 Prof. Harald Walach: ***Healing and Non-locality***
- 12:30 Dialogue with speakers
- 1:00 Lunch
- 2:15 Short contributions from the floor (8 minutes each) with response from the panel
- 3:30 Tea
- 4:00 Plenary dialogue
- 5:00 Conclusions

## THE ORGANISERS

**THE SCIENTIFIC AND MEDICAL NETWORK** is an interdisciplinary forum exploring frontiers of science, consciousness and spirituality, consisting of qualified scientists and doctors, psychologists, engineers, philosophers, psychologists and other professionals. The Network came into existence in 1973 and has Members in more than 50 countries. It questions the assumptions of contemporary scientific and medical thinking and seeks to reach beyond a materialistic world-view. By remaining open to both intuitive and spiritual insights, the Network fosters a climate in which science as a whole can adopt a more comprehensive and sensitive approach. See [www.scimednet.org](http://www.scimednet.org)

## ROYAL SOCIETY OF MEDICINE SECTION OF HYPNOSIS AND PSYCHOSOMATIC MEDICINE

The Royal Society of Medicine is an independent organisation founded 200 years ago, and is one of the largest providers of continuing medical education in the UK.

The Society is concerned to promote an exchange of information and ideas on the science, practice and organisation of medicine, both for the health professions and with responsible and informed public opinion. Within the society the Section of Hypnosis and Psychosomatic Medicine advocates understanding of the psychosomatic paradigm, and promotes the therapeutic use of hypnotic phenomena in all the specialities of medicine, surgery, and psychology.



## THE SPEAKERS



**Dr. Shaul Livnay,**

Ph.D. has been working with hypnosis for 23 years, integrating it into his therapeutic work, and thereby making his approach become much more "integrative". He has been

applying hypnosis in his work with children, adolescents and adults as well as couples. His teaching has been divided between basic & advanced training, and workshops on varied topics: hypnoanalysis, children & adolescents, non-verbal techniques, anxieties & performance anxieties. He is the Immediate Past President of The European Society of Hypnosis, on the Board of Directors of the International Society of Hypnosis, and the founder and President of the Jerusalem Chapter of the Israeli Society of Hypnosis.



**Prof. Harald Walach,** Ph.D., is a research professor in psychology at the University of Northampton, where he has developed the postgraduate training programme MSc Transpersonal Psychology/ Consciousness Studies. As the President of the International Society for Complementary Medical Research (ISCMR), he is one of the most prolific researchers in Complementary and Alternative Medicine, his main interest focused on the importance of non-specific and placebo effects. His more recent research interest is in the connection between

spirituality, mindfulness and health, and he has helped develop questionnaires to measure mindfulness and exceptional human experiences. He is the head of the European Office of the Samuelli Institute™ (SIIB), vice-president of the German Society for Transpersonal Psychology and Psychotherapy, and editor of the journals *Forschende Komplementärmedizin – Research in Complementary and Classical Natural Medicine* (Karger), and *Spirituality and Health International* (Wiley).



**Prof. Dr. Kim A. Jobst** M.A., D.M., M.R.C.P., M.F.Hom. is a Physician dedicated to Healing and Holistic Healthcare. He qualified in Medicine & Homoeopathy in Oxford and Glasgow with CCST's in Internal Medicine and Neurodegeneration and Dementia, also training in Homoeopathy, Traditional Chinese acupuncture, and Jungian psychotherapy. Kim is Editor-in-Chief of the *Journal of Alternative & Complementary Medicine*, Visiting Professor in Healthcare and Integrated Medicine at Oxford

Brookes University. He serves on a number of Scientific Advisory Boards for emerging energy medicine technologies (e.g.: the NeuroResource Group in Dallas, TX, USA., ([www.nrg-unlimited.com](http://www.nrg-unlimited.com)), Clarus Transphase Scientific in CA, USA ([www.clarus.com](http://www.clarus.com)), and the Soukya Holistic Health and Healing Centre in India ([www.soukya.com](http://www.soukya.com)). Dr. Jobst runs his own consultancy (Functional Shift Consulting Ltd) and Clinical practice in London and Hereford. Kim was a founding member of The Prince's Foundation for Integrated Healthcare, and is a founding member and member of the Steering group of The National Care Farm Initiative (UK).

# B O O K I N G F O R M

## The Healing Intention: Conscious and Unconscious 9 June 2008

PLEASE WRITE IN BLOCK CAPITALS

**Please send to:** Conference Administrator, Scientific and Medical Network,  
PO Box 11, Moreton-in-Marsh, Glos GL56 0ZF.  
**Tel:** +44 (0) 1608 652000 **Fax:** +44 (0) 1608 652001  
**Email:** info@scimednet.org **Website:** www.scimednet.org

**Name**

**Address**

**Email**

**Please send me:**

- tickets at £75 (SMN and RSM Fellows)
- tickets at £85 (non-members)
- concessionary tickets at £30 (full time students only)  
(coffee, tea and lunch included)
- I would like to make a brief floor presentation and append an abstract.

**How did you hear about the conference?**

**LUNCH – are you?** Vegetarian

**SPECIAL DIETARY REQUIREMENTS:**

### PAYMENT OPTIONS

- Cheque (payable to “**Scientific and Medical Network**”)
- Credit card (VISA or MasterCard)

**Card No:**  **Expires:**  **Security code:**

**Signature:**

**Cancellations:** a fee of £15 will be retained. No refunds after 20th May